



PREMIER

# ARIA SQUARE

CRAFTED SPACE AND REFINED LIVING

PROJECT BY:  
**PREMIER DEVELOPERS**

# Kalapatti's New Landmark of Modern Serenity.



Just 1 Minute  
from SVB Tech Park



*Thoughtfully designed spaces  
where light, air, and life flow freely.*

A rare blend of architecture and atmosphere — where every home is **bright, breezy, and beautifully balanced**.

With **1, 2 & 3 BHK Vastu-compliant residences**, spacious rooms, and **terrace amenities that inspire**, Aria Square is your perfect retreat in the heart of Coimbatore. Also stands on a 60ft x 50ft corner site, offering excellent ventilation natural light & convenient dual road access for a comfortable living experience.



PREMIER  
**ARIA SQUARE**  
CRAFTED SPACE AND REFINED LIVING





*A home where every sunrise  
brings new memories.*

Graceful in form and warm in spirit, Aria Square reflects the harmony of design and emotion. The elevation rises with confidence, yet feels inviting — much like the families who call it home. Each home captures the light, the air, and the laughter that define a life well-lived. Because at Aria Square, beauty isn't just in the walls — it's in the way life happens within them.

---





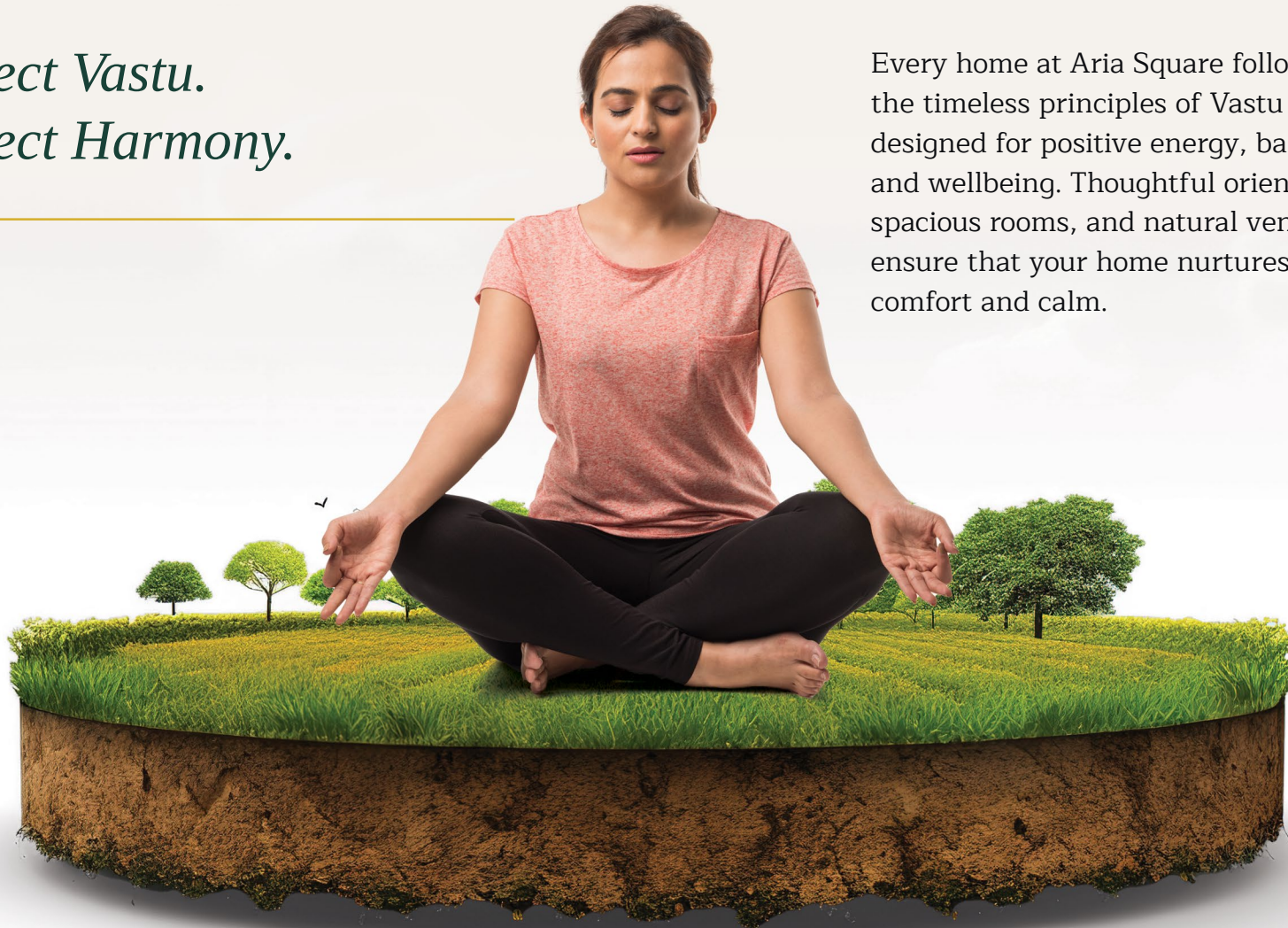
PREMIER  
**ARIA SQUARE**  
CRAFTED SPACE AND REFINED LIVING



*Perfect Vastu.  
Perfect Harmony.*

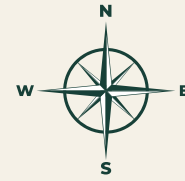
---

Every home at Aria Square follows the timeless principles of Vastu — designed for positive energy, balance, and wellbeing. Thoughtful orientation, spacious rooms, and natural ventilation ensure that your home nurtures both comfort and calm.





# TYPICAL FLOOR PLAN (1<sup>st</sup> - 4<sup>th</sup>)



A thoughtfully crafted community of 58 spacious flats.



## Area Details

**A101 - A401**  
FACING NORTH  
R.Carpet Area - 796 SQ.FT  
Saleable Area - 1075 SQ.FT

**A102 - A502**  
FACING NORTH  
R.Carpet Area - 818 SQ.FT  
Saleable Area - 1104 SQ.FT

**A103 - A503**  
FACING NORTH  
R.Carpet Area - 782 SQ.FT  
Saleable Area - 1058 SQ.FT

**A104 - A504**  
FACING NORTH  
R.Carpet Area - 816 SQ.FT  
Saleable Area - 1101 SQ.FT

**A105 - A505**  
FACING EAST  
R.Carpet Area - 811 SQ.FT  
Saleable Area - 1095 SQ.FT

**A106 - A506**  
FACING EAST  
R.Carpet Area - 829 SQ.FT  
Saleable Area - 1118 SQ.FT

**A107 - A507**  
FACING EAST  
R.Carpet Area - 856 SQ.FT  
Saleable Area - 1153 SQ.FT

**A109 - A409**  
FACING EAST  
R.Carpet Area - 1044 SQ.FT  
Saleable Area - 1407 SQ.FT

**B101-B501**  
FACING NORTH  
R.Carpet Area - 463 SQ.FT  
Saleable Area - 646 SQ.FT

**B102 - B502**  
FACING EAST  
R.Carpet Area - 467 SQ.FT  
Saleable Area - 653 SQ.FT

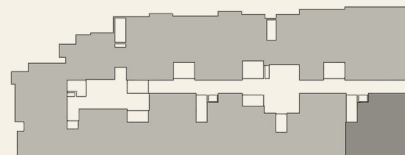
**B103 - B503**  
FACING EAST  
R.Carpet Area - 423 SQ.FT  
Saleable Area - 596 SQ.FT

**B104 - B504**  
FACING EAST  
R.Carpet Area - 422 SQ.FT  
Saleable Area - 594 SQ.FT





**UNIT NO :**  
A101 - A201 - A301 - A401



**TYPE - 2 BHK**  
**North Facing**



**RERA**  
**CARPET AREA**  
**796 SQ.FT**

**SALEABLE AREA**  
**1075 SQ.FT**





## TYPE - 2 BHK North Facing

RERA  
CARPET AREA  
818 SQ.FT

SALEABLE AREA  
1104 SQ.FT

UNIT NO :  
A102 - A202 - A302 - A402 - A502





## TYPE - 2 BHK North Facing

RERA  
CARPET AREA  
782 SQ.FT

SALEABLE AREA  
1058 SQ.FT

**UNIT NO :**  
A103 - A203 - A303 - A403 - A503







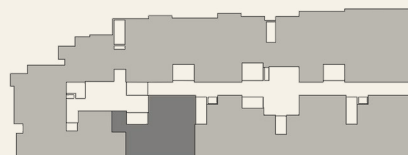
## TYPE - 2 BHK North Facing

RERA  
CARPET AREA  
**816 SQ.FT**

SALEABLE AREA  
**1101 SQ.FT**

**UNIT NO :**

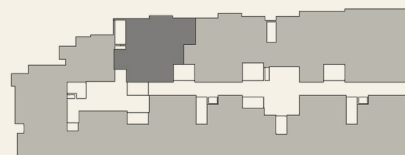
A104 - A204 - A304 - A404 - A504





**UNIT NO :**

A105 - A205 - A305 - A405 - A505



**TYPE - 2 BHK**  
**East Facing**



**RERA**  
**CARPET AREA**  
**811 SQ.FT**

**SALEABLE AREA**  
**1095 SQ.FT**





## TYPE - 2 BHK East Facing

RERA  
CARPET AREA  
829 SQ.FT

SALEABLE AREA  
1118 SQ.FT

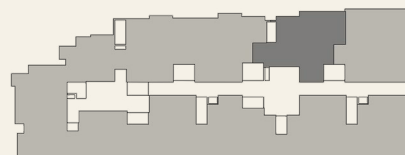
**UNIT NO :**  
A106 - A206 - A306 - A406 - A506





**UNIT NO :**

A107 - A207 - A307 - A407 - A507



## TYPE - 2 BHK East Facing



RERA  
CARPET AREA  
**856 SQ.FT**

SALEABLE AREA  
**1153 SQ.FT**



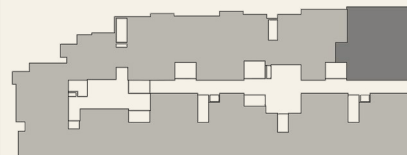


## TYPE - 3 BHK East Facing

RERA  
CARPET AREA  
**1044 SQ.FT**

SALEABLE AREA  
**1407 SQ.FT**

**UNIT NO :**  
A109 - A209 - A309 - A409





**UNIT NO :**

B101 - B201 - B301 - B401 - B501



**TYPE - 1 BHK**  
**North Facing**



**RERA**  
**CARPET AREA**  
**463 SQ.FT**

**SALEABLE AREA**  
**646 SQ.FT**





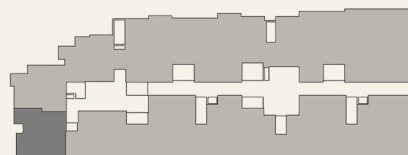
## TYPE - 1 BHK East Facing

RERA  
CARPET AREA  
**467 SQ.FT**

SALEABLE AREA  
**653 SQ.FT**

**UNIT NO :**

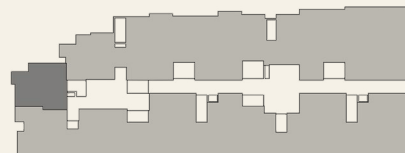
B102 - B202 - B302 - B402 - B502





**UNIT NO :**

B103 - B203 - B303 - B403 - B503



## TYPE - 1 BHK East Facing



RERA  
CARPET AREA  
**423 SQ.FT**

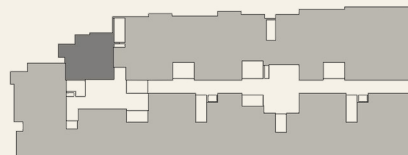
SALEABLE AREA  
**596 SQ.FT**





**UNIT NO :**

B104 - B204 - B304 - B404 - B504



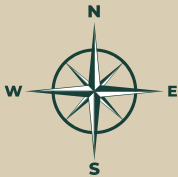
## TYPE - 1 BHK East Facing



RERA  
CARPET AREA  
**422 SQ.FT**

SALEABLE AREA  
**594 SQ.FT**

# FIFTH FLOOR PLAN (CLUB HOUSE)





FITNESS MEETS FUN,  
RIGHT AT HOME.



A man in a grey t-shirt and dark pants is running on a treadmill in a modern gym. The gym has a wooden floor, large windows, and various exercise equipment. On the left wall, there is a large graphic of a person jumping with the text 'THE BODY ACHIEVES WHAT THE MIND BELIEVES'. On the right wall, there are two posters of a muscular man with the text 'NEVER GIVE UP'. The gym is well-lit with recessed ceiling lights and large windows.

THE BODY  
ACHIEVES  
WHAT THE  
MIND  
BELIEVES

Stay active in a fully equipped gym built for strength, balance, and endurance. Unwind in the indoor games zone — a lively space to relax and reconnect. At Aria Square, fitness and fun blend seamlessly into your everyday rhythm of living well.





*Community Hall*





*Childrens Play Area*



*Indoor Games*



*Indoor Games*



*Living Cum Dining*







**A HOME THAT  
PERFECTS EVERY SPACE.**

Each space is thoughtfully designed to balance beauty and function — airy, bright, and crafted for comfort. At Aria Square, luxury feels natural, design feels personal, and every moment feels perfectly at home.





*Rooftop Party Area*



*Walking Track*





DESIGNED FOR  
WORK, WELLNESS &  
TOGETHERNESS.

Experience the harmony of productivity, relaxation, and celebration — modern co-working areas, elder seating zones, a vibrant party space, and a healing reflexology pathway. Aria Square blends every rhythm of living beautifully.



AN OPEN FLAME FOR  
OPEN HEARTS.



From smoky aromas to glowing smiles, the Barbeque Station invites you to share, savour, and celebrate. Designed for good food and great company, it's where community warmth meets culinary joy.



# SPECIFICATIONS

## STRUCTURE

Floors.	: Stilt + 5 floors
Structure	: RCC framed structure with isolated footing designed for (Seismic Zone-3) Compliance (IS Standards)
Masonry	: Solid block/Aercon block 200mm external wall & 100mm internal wall
Anti Termite	: Anti-termite treatment will be provided (As per IS Standards)

## WALL & CEILING FINISHES

Internal Walls	: Asian Paints smooth finish with 2 coats of putty, 1 coat primer & 2 coats Premium emulsion paint
External Walls	: Asian Paints exterior finishes with 1 coat white cement, 1 coat Primer & 2 coats Exterior emulsion paint
Ceilings	: Asian Paints smooth finish with 2 coats of putty, 1 coat primer & 2 coats Premium emulsion paint
Elevation	: Texture finish, stone cladding, glazing as per architect's design intent

## DOORS

Main Door	: Teak wood frame with polished designer Veneer flush door & premium locks (YALE /GODREJ or equivalent)
Bedroom Door	: Teak/Hardwood/ frame with laminated flush door & premium locks (YALE /GODREJ or equivalent)
Toilet Door	: Waterproof Engineered frame with laminated flush door & premium locks (YALE /GODREJ or equivalent)

## WINDOWS

Balcony Door	: UPVC glazed French door with mesh
Windows	: UPVC sliding windows with mosquito mesh
Ventilators	: UPVC with exhaust fan provision
Safety Grills	: MS safety grills for all windows

## FLOOR FINISHES

Living/Dining	: Vitrified Tiles – 1200x600 mm
Bedrooms	: Vitrified Tiles – 1200x600 mm
Utility	: Anti-skid Ceramic Tiles
Toilets	: Anti-skid floor tiles & wall tile 1200x600 mm
Balconies	: Rustic / Anti-skid Ceramic Tiles

## KITCHEN

Platform	: Granite platform with premium brand SS sink (Carysil/Nirali)
Wall dado	: Ceramic tile dado 2 ft above counter
Electrical	: Provision for chimney, hob, water purifier, refrigerator, oven, mixer
Utility area	: Washing machine & dishwasher provision

## PLUMBING

Sanitary Fixtures & CP Fittings	: Premium brands (Jaquar /American Standard or equivalent) with single lever diverter & wall hung WCs
Inner Pipe Lines	: Concealed CPVC pipe lines, UPVC for other plumbing lines & PVC lines for underground drainage
Wall Dado	: Wall tiles upto 7' height from finished floor level
Grouting	: Epoxy grouts used for floor area only with 4mm spacer
Others	: Provision for exhaust will be provided in all toilets, electrical provision for shaver/hair dryer, mirror light, geyser & exhaust fan

## ELECTRICAL

Power Supply	: 3 Phase power supply will be provided
Wires	: Fire Retardant Low Smoke (FRLS) Copper wires of premium brands (Finolex / Polycab / RR Kabel or equivalent)
Safety Devices	: MCB, ELCB & DB of premium brands
Switches & Sockets	: Modular switches & sockets (Legrand / Schneider or equivalent)
Air Conditioner Points	: Adequate electrical points with AC provision in all bedrooms
UPS Provision	: Inverter/UPS provision for all lights & fans
DTH/TV Points	: TV point will be given in living and master bedroom

## SECURITY & SAFETY

- 24x7 security with intercom facility
- CCTV surveillance in common areas
- Video door phone provision in each flat
- Automatic boom barrier at entry/exit

## ELEVATORS

- High-speed automatic lifts (Johnson / Otis / KONE or equivalent)
- Backup power for all lifts & common area





PREMIER

ARIA SQUARE

CRAFTED SPACE AND REFINED LIVING

A LANDMARK RISES  
WITH PRIDE



# SMART LIVING, ENHANCED EVERY DAY. INNOVATION INSIDE EVERY AMENITY.

Experience the ultimate in modern living. Our community is packed with thoughtful, future-forward amenities designed to make life easier, greener, and more enjoyable. From robust security and power solutions to eco-friendly systems and spaces for every passion – gym, games, relaxation, and even EV charging – we've thought of everything. Discover a home where every amenity enhances your lifestyle.



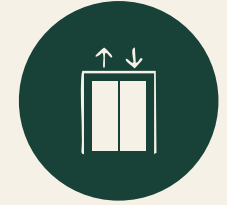
CCTV  
Surveillance



Rainwater  
harvesting



Sewage Treatment  
Plant (STP)



Automatic  
Elevators



EV Charging  
provision



UPS Provision  
in flats



Multipurpose  
hall



Fully  
Equipped Gym



Indoor games  
facility



Power Backup



Children's Play  
Area



Barbecue  
Area



Outdoor  
workspace



Terrace  
walking track



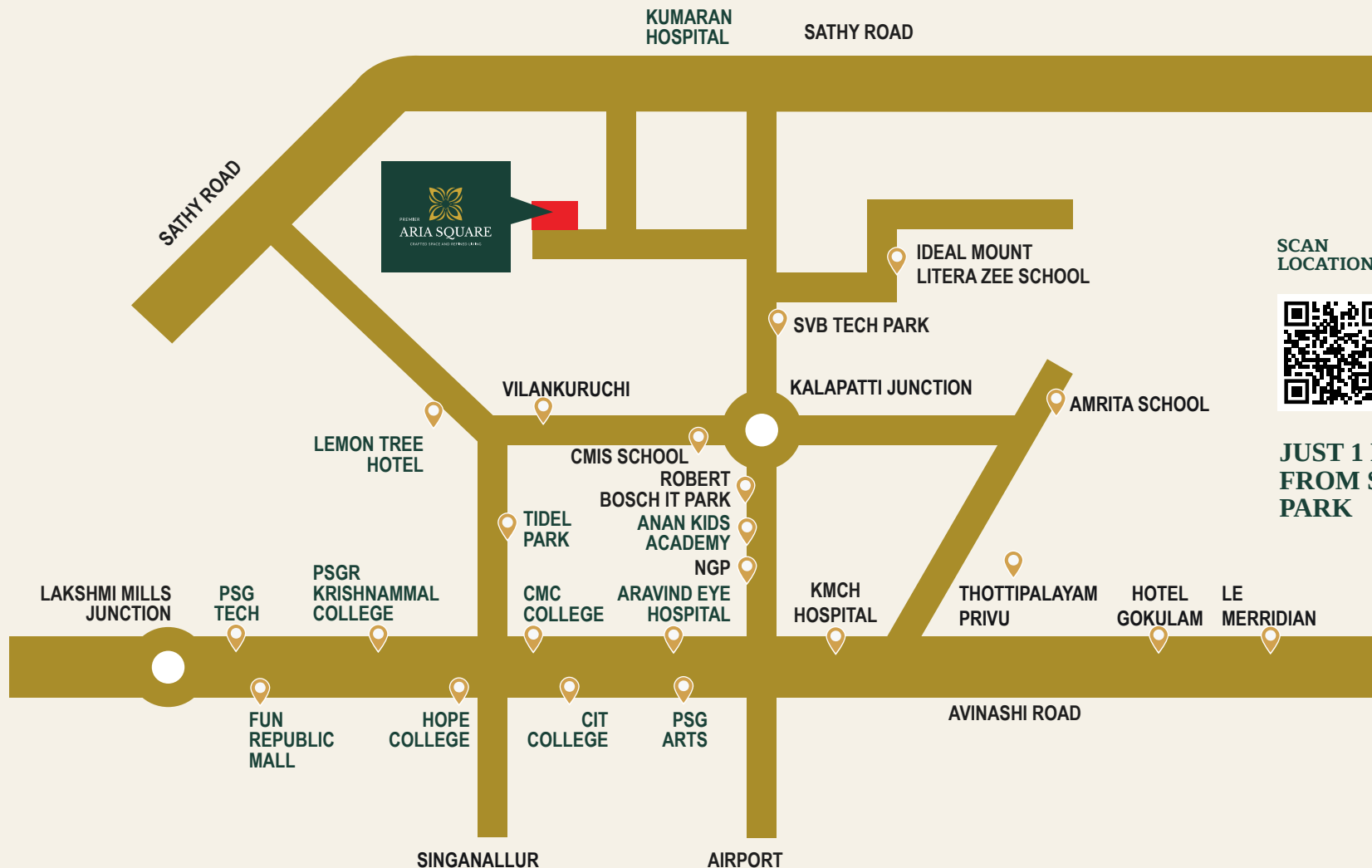
Rooftop sitting &  
Party Area



Open Air  
Yoga Deck

*The Center of  
 Convenience.  
 The Heart of Kalapatti.*

From renowned schools and hospitals to lifestyle avenues and transport hubs — Kalapatti keeps you effortlessly connected. Yet, Aria Square feels tucked away from the rush — offering peaceful community living within city reach.



SCAN  
 LOCATION



**JUST 1 MINUTE  
 FROM SVB TECH  
 PARK**



# LOCATION ADVANTAGE



## HOSPITALS

Kumaran Medical Center	- 2.0 KM
CRI Trust Healthcare	- 4.0 KM
KMCH Kovilpalayam	- 4.0 KM
KMCH Avinashi Road	- 7.0 KM
Dr.Muthus Multyspeciality Hospital	- 7.0 KM
Aravind Eye Hospital	- 9.0 KM



## SCHOOLS

The Aalam Montessori School	- 1.5 KM
Ideal Mount Litera School Zee	- 2.0 KM
Chandramari International School (CMIS)	- 3.0 KM
Adithya Global School	- 3.0 KM
NGP School	- 4.0 KM
Suguna PIP	- 6.0 KM
Chandrakanthi Public School	- 7.0 KM



## COLLEGES

SNS College of Technology	- 1.0 KM
PPG Institute of Technology	- 2.0 KM
Adithya Institute of Technology	- 3.0 KM
NGP Institute	- 4.0 KM
Suguna College	- 6.0 KM
PSG Arts & Science College	- 8.0 KM
CIT College	- 9.0 KM



## CONNECTIVITY

Coimbatore International Airport	- 7.0 KM
M.Bus stand Singanallur	- 12.0 KM
M.Bus stand Gandhipuram	- 14.0 KM
Central Railway Station	- 15.0 KM
Proposed Sathy Road Metro Station	- 1.0 KM



## SHOPPING & ENTERTAINMENT

Brodway Mall	- 7.0 KM
Prozone Mall	- 9.0 KM
Codissia Trade Center	- 9.0 KM
Fun Mall	- 11.0 KM



## IT-PARK

SVB Tech Park	- 500 Mtr
Tanny CAG Tech Park	- 2.0 KM
Bosch Global Tech Park	- 3.0 KM
KGISL SEZ IT Park	- 6.0 KM
Elcot IT Park	- 9.0 KM



## HOSPITALITY

Lemon Tree	- 3.0 KM
Zone Connect	- 6.0 KM
Jenneys Residency	- 8.0 KM
Le Meridian	- 10.0 KM

**Disclaimer:** While utmost care has been taken in preparing this brochure and the model/show flat, the developer and its agents shall not be held responsible for any discrepancies or inaccuracies. All visuals, layouts, and illustrations are artist's impressions for general reference only and do not represent actual facts. Information, specifications, and plans are subject to change without prior notice at the developer's discretion or as required by authorities. Nothing in this brochure forms part of any offer or contract. The terms of the Sale and Purchase Agreement shall prevail. Room measurements include the utility area (where applicable) and are given in feet, inches, and meters. Payment schedules may vary based on construction progress.



---

FOR BOOKINGS : 96265 44333 / 97519 44333

---

**Reg Office:** NO 11,TNHB,Thiru Nagar, Singanallur,Coimbatore-641 005

**Site Office:** 47/2A1,Opposite to SVB Tech Park Road, Kalapatti,Coimbatore – 641048

**Email :** sales@premierdevelopers.in

[www.premierdevelopers.in](http://www.premierdevelopers.in)



RERA :TNRERA/11/Building/0331/2025  
[www.rera.tn.gov.in](http://www.rera.tn.gov.in)